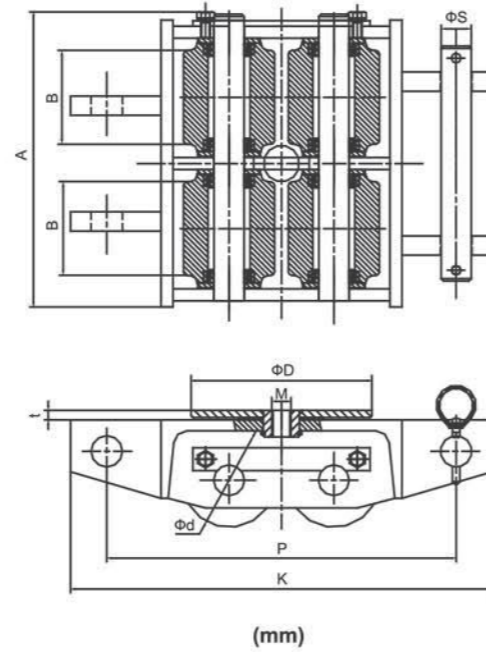
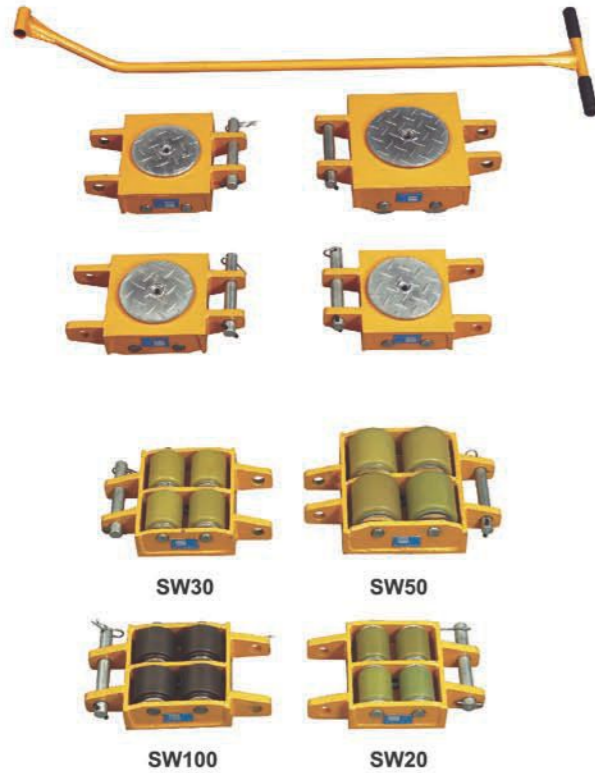


SKATES

- ▲ Shifting skates can be used wherever heavy objects have to be moved. The Load can be lifted using either the roller crowbar or a jack, allowing the skates to be easily positioned.
- ▲ The large diameter sealed nylon rollers ensure ease of movement and spread the load, protecting high quality floors from damage by high point loads and oil/grease contamination.
- ▲ The skates are maintenance free and are fitted with handles for ease of carrying and positioning. The platforms of the skates are fitted with a rubber surface which helps stability and protect the object being moved.

Skates Fixed Type SW series



Model		SW20	SW30	SW50	SW80	SW100
Max.Capacity	(tonne)	2	3	5	8	10
Net Weight	(kg)	13	17	32	42	20
Running Resistance	Steel Road Surface	0.05	0.05	0.05	0.05	0.03
	Concrete Road Surface	0.07	0.07	0.07	0.07	0.07
Frame	A	214	244	284	344	204
	K	330	350	400	460	350
	P	270	290	340	400	290
	H	84	94	124	144	99
	g	15	14	29	34	19
	ΦS	26	26	26	31	26
Roller	Type	Urethane	Urethane	Urethane	Urethane	Steel
	Pcs	4	4	4	4	4
	Φd	65	75	100	120	78
	B	75	90	110	140	70
	Turn Table	ΦD	150	150	180	240
	t	6	6	9	9	6
	M	M16	M16	M20	M20	M16

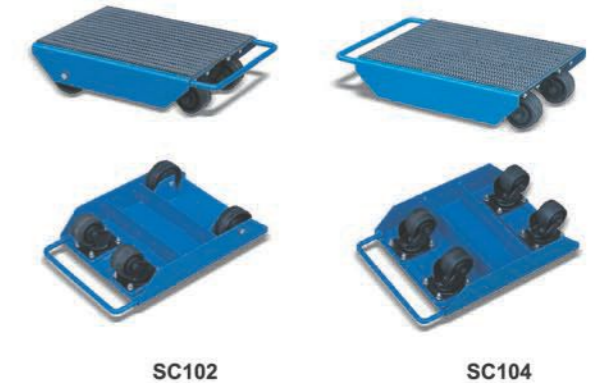
Handle as option.

Skates Fixed Type SF series



Model No.		SF10	SF20	SF25	SF30	SF60
Capacity	(tonne)	1	2	2.5	3	6
No. of Roller	(pcs)	4	8	2	4	6
No. of Axle	(pcs)	2	2	2	2	3
Roller Size	ΦxW (mm)	100x35	100x35	85x90	85x85	85x85
Skate Dimensions	LxWxH (mm)	330x220x120	330x220x120	220x112x100	330x220x100	265x198x100
Net Weight	(kg)	7	8	4	9.5	12

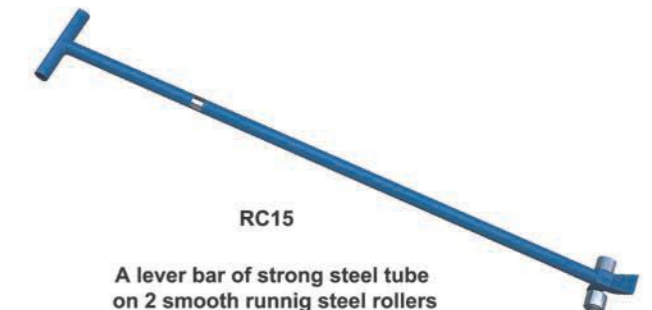
Skates with Casters SC series



Model No.		SC102	SC104
Capacity	(tonne)	1	1
No. of Castor		2	4
No. of Fixed Roller		2	0
Roller Size	ΦxW (mm)	Castor 75x46 Roller 100x35	Castor 75x46 —
Skate Dimensions	LxWxH (mm)	430x340x120	430x340x120
Skate Weight	(kg)	13	14

Roller Crowbar RC series

Model No.		RC15	RC50
Capacity	(tonne)	1.5	5
Length	(mm)	2000	2000
Max. Skate Height	(mm)	145	145
Roller Diameter	(mm)	75	70
Roller Width	(mm)	55	54
Net Weight	(kg)	13	30



RC15
A lever bar of strong steel tube on 2 smooth running steel rollers

Adjustable Skates CM series

▲ The adjustable skates are actually 2 skates each, they are connected by two steel rods making one skate adjustable from 500mm to 1400mm (model CM60) and 720mm to 1500mm (model CM120 and CM240).

HOT! SALE



Model	CM60	CM120	CM240
Capacity (tonne)	6	12	24
Type of Roller	nylon	nylon	steel
No. of Roller (pcs)	8	12	16
Skate Dimensions LxWxH (mm)	300x250x110	360x220x110	360x220x110
Net Weight (kg)	30	38	65

Steerable Skates ST series

▲ They incorporate a 1 meter drawbar and a platform that swivels on a thrust bearing allowing movement around bends.

HOT! SALE



Model	ST30	ST60	ST120
Capacity (tonne)	3	6	12
Type of Roller	nylon	nylon	steel
No. of Roller (pcs)	4	8	8
Roller Size $\Phi \times W$ (mm)	$\Phi 85 \times 90$	$\Phi 85 \times 90$	$\Phi 83 \times 85$
Dimensions LxWxH (mm)	310x255x105	630x400x115	630x400x115
Net Weight (kg)	15	50	66

Steerable Skates ET series

Professional class

- ▲ You can get smooth running on the ET series skates.
- ▲ Skates are available in two versions type A & B.
- ▲ Type A can be steerable, Type B can be laterally adjustable.
- ▲ Power coated give a high quality durable finish.



Model No.	ET3A	ET6A	ET9A	ET12A	ET20A
Capacity (tonne)	3	6	9	12	20
Loading Height (mm)	110	110	110	110	180
Roller Size (mm)	$\Phi 85 \times 68$	$\Phi 85 \times 68$	$\Phi 85 \times 68$	$\Phi 85 \times 68$	$\Phi 140 \times 64$
Number of Roller (pcs)	4	8	12	16	16
Dia of 180° Rotating Platform (mm)	170	170	170	170	250
Dimensions LxW (mm)	270x230	610x520	815x600	990x600	1090x730
Length of Handlebar (with pulling eye) (mm)	960	1080	1080	1080	1620
Net Weight (kg)	15	45	56	73	188

Model No.	ET3B	ET6B	ET9B	ET12B	ET20B
Capacity (tonne)	3	6	9	12	20
Loading Height (mm)	110	110	110	110	180
Roller Size (mm)	$\Phi 85 \times 85$	$\Phi 85 \times 85$	$\Phi 85 \times 85$	$\Phi 85 \times 85$	$\Phi 140 \times 85$
Number of Roller (pcs)	4	8	12	16	16
Dimensions of Load Bearing Area (mm)	150x150	200x220	180x170	200x220	280x220
Range of Connecting Rod Adjustable (mm)	960	1080	1080	1080	1620
Net Weight (kg)	16	32	34	45	95

Complete Skates Kits SK04 series

Model	SK04
Capacity (kg)	4000
Dimensions of Roller Skate LxWxH (mm)	154x102x90
Swivel Top (mm)	$\Phi 90$
Dimensions of Roller Dia. xL (mm)	$\Phi 18 \times 51$
Length of Handle Bar (mm)	850
Dimensions of the box LxWxH (mm)	470x180x160
Weight of kit (kg)	24

Include four roller skates, two steering handles, one box.



Steerable Skates CRP series

HOT! SALE

- ▲ Heavy duty dolly structure with top plate.
- ▲ Rotating roller provide 360 degree rotating with maximum maneuverability.



Model No.	CRP05	CPR10	CRP20	CRP40
Load Capacity (kg)	500	1000	2000	4000
Number of Roller (pcs)	3	4	3	5
PU Roller (mm)	φ50×60	φ50×60	φ80×70	φ80×70
Pad Height (mm)	90	90	110	110
Pad Width (mm)	400	450	500	585
Pad Depth (mm)	410	510	410	510
Pad Diameter (mm)	150	150	165	165
Net Weight (kg)	13	17	25	37

Complete Skates Kits SK series

- ▲ For short, variable transportation distances.
- ▲ For installation works and movement of heavy loads.
- ▲ The steering handle gives you precise control making it easy to maneuver large machinery or into tight areas.
- ▲ Moving speed not exceed 5m/min.
- ▲ Minimum turning radius is 3m.

IMPORTANT!

- ▲ All maximum carrying capacities are based for use on a steel surface, which withstands the pressure of the chain-roller. For safety, the carrying capacities in complete sets are calculated so that 2 Roller Skates could support the full load on uneven surfaces.
- ▲ The track surface is important for the safe transportation of the load, not the carrying capacity of the Roller Skate. Tiles are unsuitable. Movement on tarmac and concrete is restricted. In these cases it is recommended to put a steel plate of a minimum of 10mm thickness underneath.
- ▲ Due to the little effort required to overcome the rolling resistance (4-7% of the total load) precautionary measures must be taken for use on inclined surfaces.

HOT! SALE



Including 4 roller skates, 2 turntables, 2 packing plates, 2 steering handles, 2 link-up bars, one draw bar, one metal box.

Model No.	SK20	SK30	SK60
Capacity (tonne)	20	30	60
Length Support (mm)	120	120	130
Width Support (mm)	120	120	130
Total Height (mm)	108	117	140
Rollers Dia. (mm)	Φ18	Φ24	Φ30
Swivel Top (mm)	Φ130	Φ130	Φ150
Weight of Set (kg)	50	58	92

Steerable Skates CRO / CRA series

HOT! SALE



Skates Fixed type

Model No.	Max.Load cap. (Ton)	Numbers of Rollers	Roller Material	Overall Dimension (mm)	Net Weight (kg)
CRO-4	6	4	PU	300x222x100	12.5
CRO-6	8	6	PU	400x222x100	18
CRO-8	12	8	PU	500x222x100	26.5
CRO-9	15	9	PU	400x308x100	27.5
CRO-12	18	12	PU	500x312x100	36
CRO-16	24	16	PU	500x400x100	49
CRO-20	30	20	PU	590x400x100	59
CRO-25	36	25	PU	590x480x100	79

Skates with Turntable

Model No.	Max.Load cap. (Ton)	Numbers of Rollers	Roller Material	Overall Dimension (mm)	Net Weight (kg)
CRA-4	6	4	PU	300x222x110	13.5
CRA-6	8	6	PU	400x222x110	20
CRA-8	12	8	PU	500x222x110	27.5
CRA-9	15	9	PU	400x308x110	28.5
CRA-12	18	12	PU	500x312x110	37
CRA-16	24	16	PU	500x400x110	52
CRA-20	30	20	PU	590x400x110	68
CRA-25	36	25	PU	590x480x110	82

Skates Steerable

Model No.	Max.Load cap. (Ton)	Numbers of Rollers	Roller Material	Min.Height (mm)	Net Weight (kg)
CRB-4	6	4	PU	115	14
CRB-6	8	6	PU	115	19
CRB-8	12	8	PU	115	26
CRB-12	15	9	PU	115	30

Container Transport Skates CRE / CRF series

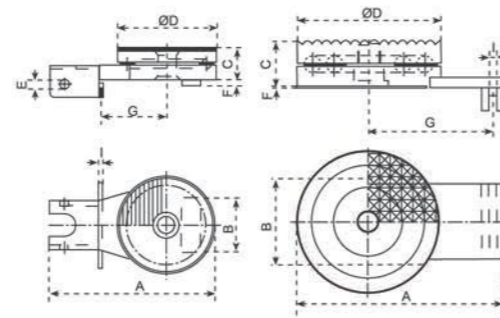
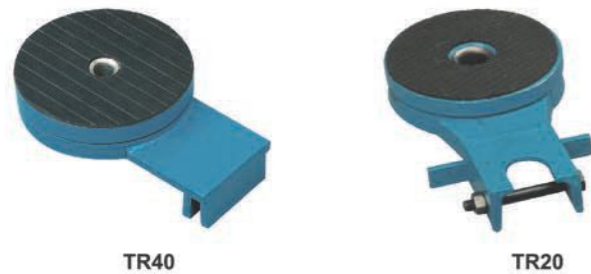
- ▲ Container can be transported on a low installation level.
- ▲ Suitable for all ISO-container.
- ▲ Safer transport the container with locker.
- ▲ Containers can be moved with a low fitting height.
- ▲ Interlocking fit and force fit between the roller skates and the containers (Twistlock) or just interlocking fit (Weld-on Cone System)



Model No.	CRE-8	CRF-8	CRE-16	CRF-16
Load Capacity (tons)	8	8	16	16
No. of Rollers	8	8	16	16
Castors (mm)	96x85	96x85	85x90	85x90
Overall Size (mm)	2850x1030x160	2300x300x160	2850x1030x160	2500x300x160
Net Weight (kg)	140	90	160	70
Fitting height (mm)	118	118	118	118
Fitting height (mm)	160	160	160	160
Width of track an connecting rod (mm)	/	2260	/	2260
Cassette dimensions (mm)	800x370	/	800x570	/

Turn Table TR series

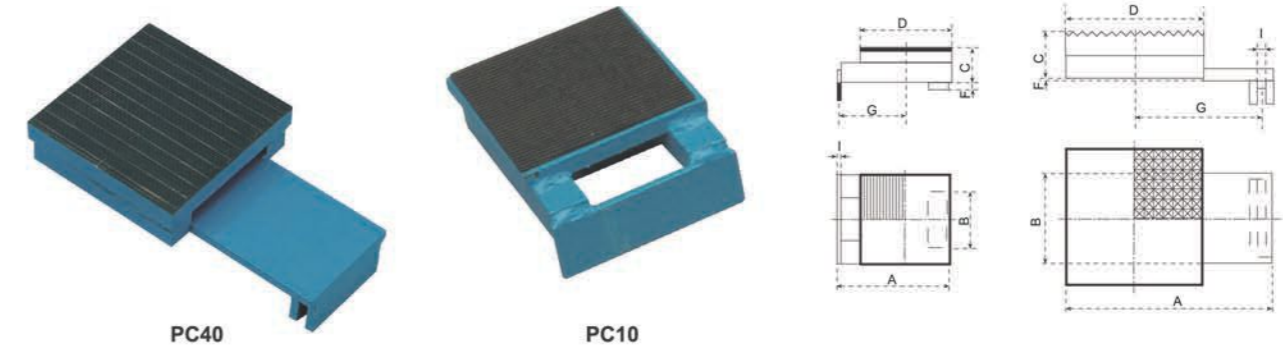
- ▲ Turntable are to be placed on top, handle must to be attached.
- ▲ Holding while roller skate is moving, minimum turning radius is 3m.



Model	TR10	TR20	TR30	TR40	TR50
A	220	250	275	360	
B	74	86	114	128	
C	41	46	64		
ΦD	128	150	190	220	
E		11			
F		8		3	
G	88	105	165	235	
I		5		11	
Wt. (kg)	4.5	6.7	13.7	18.9	

Packing Plate PC series

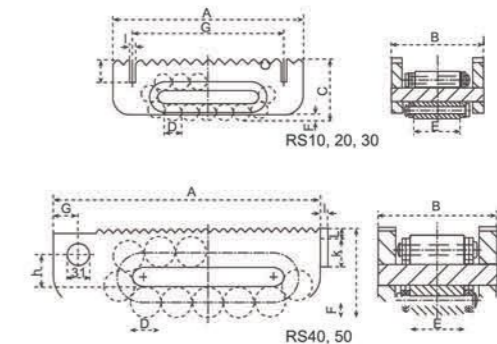
- ▲ Packing plate for compensating the difference in height between skates with turntable and the one without turntable.



Model	PC10	PC20	PC30	PC40	PC50
A	153	175	270	350	
B	74	86	114	128	
C	37	45	61		
D	120	130	180	200	
F		8		3	
G	88	105	165	235	
I		5		11	
Wt. (kg)	3.7	5.3	13.8	18.8	

Roller Skates RS series

- ▲ Stable, rugged and low level construction.
- ▲ All maximum carrying capacities are based for use on a steel surface, which withstands the high pressure of the chain-rollers.
- ▲ The movement on tarmac and concrete is restricted. In these cases, a steel plate of a minimum of 10mm thickness is recommended.
- ▲ Moving speed not to exceed 5m/min.



Model	RS10	RS20	RS30	RS40	RS50
A	206	216	268	380	530
B	100	112	127	168	182
C	67	74	91	125	145
D	18	24	30	42	50
E	51	58	66	76	86
F	7	11	13	16	19
G	166	178	218		36
H				48	60
I		8			10
K		26			40
L					15
Rollers under stress	5		4		6
Number of Rollers	15		13		17
Capacity (tonne)	10	15	30	60	80
Wt. (kg)	5.2	7.3	13	32.0	61.0

Roller Skates VA series

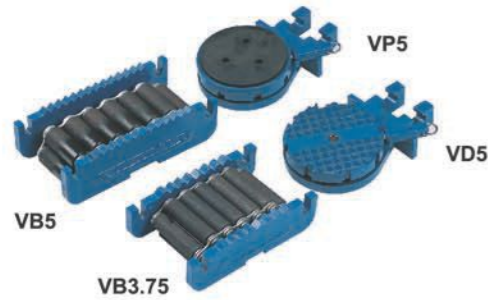
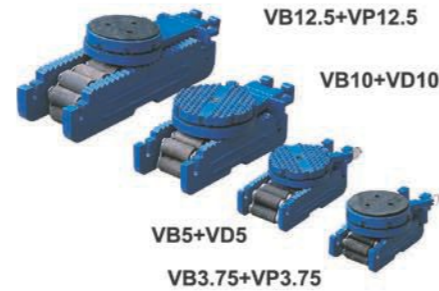
- ▲ Ideal for linear, repetitive movement, or use as a built-in component in equipment.
- ▲ Rollers are built for long life and a wide range.
- ▲ Rollers have a fixed hole pattern for bolt-mounting.
- ▲ Rollers can be used right side up, inverted, or on their side.


VA15

Model	VA0.75	VA2.5	VA5	VA8	VA15	VA20	VA50
Capacity (tonne)	0.75	2.5	5	8	15	20	50
Size of Roller $\Phi \times L$ (mm)	17x51	24x62		24x84	30x70	30x102	41x89
Number of Roller (pcs)	16	12	13		14		20
Dimension LxWxH (mm)	165x178x79	165x178x92	203x203x79	203x203x79	270x254x98	270x254x98	417x305x140
Net Weight (kg)	5	10		11	21	22	67

Roller Skates VB / VD / VP series

- ▲ Low profile rollers suit for wide range of operating condition.
- ▲ Each has a respective swivel attachment to provide turning and positioning capability.
- ▲ Two types swivel top are available: VD-Diamond top, VP-Rubber pad top.


VB5
VB3.75
VP5
VD5

VB12.5+VP12.5
VB10+VD10
VB5+VD5
VB3.75+VP3.75

Model	VB3.75	VB5	VB10	VB12	VB25	VB65
Capacity (tonne)	3.75	5	10	12	25	65
Size of Roller $\Phi \times L$ (mm)	24x62	24x84	30x70	30x80	41x89	49x92
Number of Roller (pcs)	13			14		18
Dimension LxWxH (mm)	219x117x70	219x140x70	264x133x86	264x143x86	397x171x121	584x191x143
Net Weight (kg)	7	9	13	14	36	71

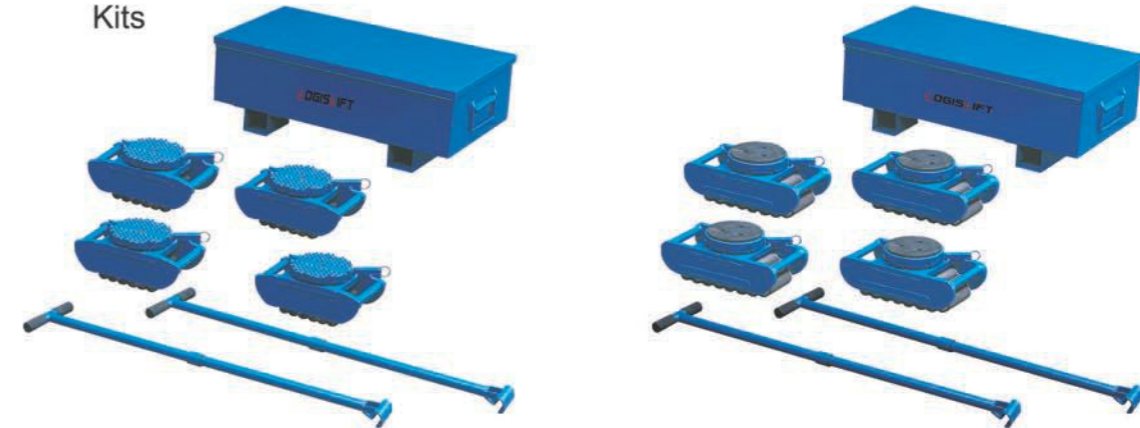
Swivel Attachment: VD-Diamond top, VP-Rubber pad top

Model	VD3.75	VD5	VD10	VD12.5	VD25	VD65
	VP3.75	VP5	VP10	VP12.5	VP25	VP65
Height (combined with roller) (mm)	113		129		181	203
	132		148		189	222
Length (mm)	283		324		457	641
Width (mm)	149		152		203	
Net Weight (kg)	6		7		18	21

Roller Skates HRS series

- ▲ Rollers have rigid chain of steel rolls rotating around a central load plate in the frame.
- ▲ Rollers have built-in tops with swivel locking, SVD-Diamond steel top, SVP-Rubber pad top
- ▲ A full prepackaged kits and sets are also available.
- ▲ Sets and kits contain four swivel locking style rollers and two full length steering handles.

Kits


HRS-40-SVD
HRS-60-SVP

Model	HRS-15-SVP	HRS-15-SVD	HRS-40-SVP	HRS-40-SVD	HRS-60-SVP	HRS-60-SVD
Capacity (tonne)	15		40		60	
Kits Include	Four SVP3.75	Four SVD3.75	Four SVP10	Four SVD10	Four SVP15	Four SVD15
	Two steering handle, One metal box					
Net Weight (kg)	89	84	92	88	108	

Individual Roller SVP / SVD series

- ▲ SVD-Diamond steel top, SVP-Rubber pad top.


SVD10
SVP10
SVD15
SVP15

Model	SVP3.75	SVP10	SVP15	SVD3.75	SVD10	SVD15
Capacity (tonne)	3.75	10	15	3.75	10	15
Size of roller $\Phi \times L$ (mm)	24x84		30x102	24x84		30x102
Top style	Swivel locking padded			Swivel locking with diamond steel grid		
Number of roller (pcs)	14		16	14		16
Dimensions LxWxH (mm)	267x146x127	267x146x133	324x165x130	267x146x121	267x146x133	324x165x130
Net Weight (kg)	15	17	21	15	16	21

Manual Furniture Mover FM60

- ▲ Safely operated by one person.
- ▲ Robust lifting mechanism.
- ▲ Sold in one set only.



**HOT!
SALE**



Model		FM60
Load Capacity	(kg)	600
Lifting Height	(mm)	300
Lifting Plate	WxD (mm)	225x120
Wheel, Polyurethane	(mm)	Φ125
Overall Size	LxWxH (mm)	570x390x780
Net Weight	(kg)	25

Hydraulic Furniture Mover FM series

- ▲ For professional transport of heavyweight items.
- ▲ Ideal for delivery, removal, maintenance and assembly applications
- ▲ For switch cupboards, safes, containers and machinery.
- ▲ Sold in one set only.



**HOT!
SALE**

Model		FM180A	FM180B
Load Capacity	(kg)	1800	1800
Lifting Height	(mm)	100	250
Lifting Plate	WxD (mm)	600x60	600x60
Wheel, Polyurethane	(mm)	Φ150	Φ150
Overall Size	LxWxH (mm)	680x420x1000	680x420x1070
Net Weight	(kg)	80	86

Mechanical Jack MJ series

- ▲ Lift the object from the floor easily.
- ▲ Use handle bar to lift the object first and slide the jack under this object, then slide corner movers in accordingly.
- ▲ Sold in set only. Including 1pc lifting handle and 2pcs mechanic jacks.



MJ1000A



Model		MJ1000A	MJ1000B
Lifting Capacity Per Pair	(KG)	1000	1000
Min./Max. Lifting Height	(mm)	12/50	12/50
Wheel Diameter	(mm)	Φ138x28	Φ138x28
Material of Wheel		Steel	Polyurethane
Overall Size	(mm)	168x118x275	168x118x275
Net Weight/Set	(kg)	10	9.6

Hydraulic Equipment Mover FM series

- ▲ For professional transport of heavyweight items.
- ▲ Ideal for delivery, removal, maintenance and assembly applications.
- ▲ For switch cupboards, safes, containers and machinery.
- ▲ Sold in 2 pcs / one set only.



Model		FM60-N	FM90-1	FM90-2	FM180B-N	FM180-2	FM180-3
Type		Manual	Hydraulic				
Rated Capacity	(kg)	600	900		1800		
Lifting height	(mm)	380	127		250	305	
Wheels, Polyurethane		Alu. PU, Swivel, 6"x2", 4 PCS	Phenolic PU, Swivel, 5"x2", 4 PCS	PU, Swivel, 5"x2", 4 PCS	Steel PU, Rigid, 6"x2", 4 PCS	Steel PU, Swivel, 6"x2", 4 PCS	PU, Swivel, 6"x2", 4 PCS
Net Weight	(kg)	52	73	75	93	143	142

Model		FM270-1	FM270-2	FM270-3	FM270-4	FM360-1	FM450-1	FM450-2	
Type		Hydraulic							
Rated Capacity	(kg)	2700				3600	4500		
Lifting height	(mm)	150	305			150			
Wheels, Polyurethane		Steel PU, Swivel, 6"x2-1/2", 4 PCS	PU, Swivel, 6"x2-1/2", 4 PCS	Steel PU, Swivel, 6"x2-1/2", 4 PCS	PU, Swivel, 6"x2-1/2", 4 PCS	Steel PU, Swivel, 8"x2-1/2", 4 PCS	PU, Swivel, 8"x3", 4 PCS		
Net Weight	(kg)	148	141	164	164	182	220	218	

Desk Mover DM270

- ▲ Quickly move a double pedestal desk without removing contents or drawers.
- ▲ Positive safety latch automatically locks in the raised position.
- ▲ Heavy duty 50mm (2") swivel castors for easy maneuvering.
- ▲ Removable handle and tubular lift frame assembly is completely powder coated.



Model		DM270	
Capacity		270kg	600lbs
Lowered Height		120mm	5 1/2"
Raised Height		245mm	10"
Handle Height		880mm	34.65"
Castor Size (Dia.)		50mm	2"
Overall Size		840x558x880mm	33"x22"x35"
Net Weight		17.5kg	39lbs

Corner Movers AR series

- ▲ Low level corner bogies used to move awkward rectangular loads.
- ▲ Give mobility in locations where normal equipment for such handling cannot be used.
- ▲ Easy to position-lift one side of load by a transport jack and slide in corners, then repeat for other side.
- ▲ Load platform covered with ribbed rubber for load protection.
- ▲ AR100A and AR100B are made of casting aluminum.
- ▲ AR150 frame is made of press steel.
- ▲ 3pcs ball bearing castors in each corner mover.
- ▲ Sold in one set (4pcs) only.



AR100A



AR100B



AR150



AR150B ABS

HOT! SALE

Model		AR100A	AR100B	AR150	AR150B
Max. Load Each	(kg)	100	100	150	150
Castor Diameter	(mm)	Φ50X20	Φ50X20	Φ50X20	Φ50X20
Load Height	(mm)	15	15	15	15
Overall Size	(mm)	305x165x85	195x165x85	366x204x85	366x204x85
Frame Material		Aluminium	Aluminium	Steel	ABS
Net Weight Per Set	(kg)	5.6	4.8	8	3.6

Maintenance Ramp KCQ series

- ▲ Easy to use.
- ▲ Non-slip running surface.
- ▲ Two fixed castor for easy handling.



KCQ201

Model	KCQ201	KCQ202
Capacity	(t)	20
Height	(mm)	242
Width	(mm)	343
Length	(mm)	1197
Net Weight	(kg)	49
Wheel	(mm)	2XΦ125

Trailer Stabilizer Jack TJ series

A "must" for safely loading and unloading trailers !

Meet OSHA Specification with our wide variety of Trailer Stabilizing Jacks OSHA 1910.178(k)(3) states "Fixed jacks may be necessary to support a semi-trailer and prevent upending during the loading or unloading when the trailer is not coupled to a tractor".

HOT! SALE

Spin-Top Jacks TJ40 series

- ACME threaded screw design.
- Reflective collar and safety yellow painting.

Trailer stabilizing Jacks TJ50 series

- Ratchet screw design, reversible.
- Reflective collar and safety yellow painting.

Ratchet Beam Jacks TJ60 series

- Ratchet screw design, reversible.
- Reflective collar and safety yellow painting.

Economy Trailer Stabilizing Jack TJ70 series

- ACME threaded screw design.
- Reflective collar and safety yellow painting.



TJ40

TJ50

TJ60A



TJ70

TJ70A

Model	TJ40	TJ40A	TJ50	TJ50A	TJ50B	TJ50C	TJ50D
Service Range	(in.)	39 1/2-51	39 1/2-51	39-51			45-57
Static Capacity	(lbs/ tonne)	100000/45		100000/45		80000/36	100000/45
Lifting Capacity	(lbs/ tonne)	40000/18	50000/22.7	40000/18	50000/22.7		40000/18
Cap Size		7.5" diameter	8" diameter	7 5" diameter		8" diameter	
Base Plate		15" triangular	14" diameter		16" triangular		
Wheel Dia.		10" solid rubber	10" semi-pneumatic		10" solid rubber		
Net Weight	(lbs/ kg)	110/50	125/57	125/57	110/50	125/57	115/52

Model	TJ60	TJ60A	TJ70	TJ70A
Service Range	(in.)	39 1/2-51		44-51
Static Capacity	(lbs/ tonne)	100000/45	80000/36	50000/22.7
Lifting Capacity	(lbs/ tonne)	50000/22.7	40000/18	none
Cap Size		6"W x 24"L		5"x 5" square
Base Plate		15" triangular	16" triangular	14" diameter
Wheel Dia.		8" semi-pneumatic, 4" emi-steel	10" solid rubber, 4" emi-steel	-
Net Weight	(lbs/ kg)	195/88.5	180/82	45/20.5

Steel Jack HVS/HKB series

- Logislift steel jacks HVS and HKB are developed in accordance with the latest safety regulations. With milled rack, geared wheels and tempered parts of driving gear.
- In accordance with DIN 7355 (type HVS).
- Suitable for lifting loads of any type.
- With lifting body.
- Safety crank with folding handle.
- Type HKB comes with low body height.
- Lifting either with fixed toe or on clawed head.
- All construction components standardized.
- Low expenditure of force through optimal ratio.



Model	HVS-1.5	HVS-3	HVS-5	HVS-10	HVS-20	HKB-1.5	HKB-3	HKB-5	HKB-10
Safe Working Load (kg)	1500	3000	5000	10000	20000	1500	3000	5000	10000
Height of Load (mm)	725			800		570		600	
Lifting Height (mm)	350		300		340		300		
Height of Claw In Lowest Position (mm)	70	75	70	90	95	70	75	70	80
Net Weight (kg)	12	20	24	42	60	11	18	22	38

Steel Jack HAS series

with adjustable lifting claw

- Suitable for lifting loads of any type
- For a variety of lifting points
- Low expenditure of force through optimal ratio
- Lifting claw adjustable in 6 positions
- Large base plate

Model	HAS-3	HAS-5	HAS-10	HAS-15
Safe Working Load (kg)	3000	5000	10000	15000
Height of Load (mm)	720		792	805
Lifting Height (mm)	350	300		285
Height of Claw In Lowest Position (mm)	69	64	85	120
Net Weight (kg)	25	30	48	63



Safety Ratchet Crank T series

To be supplied as an option for steel jacks

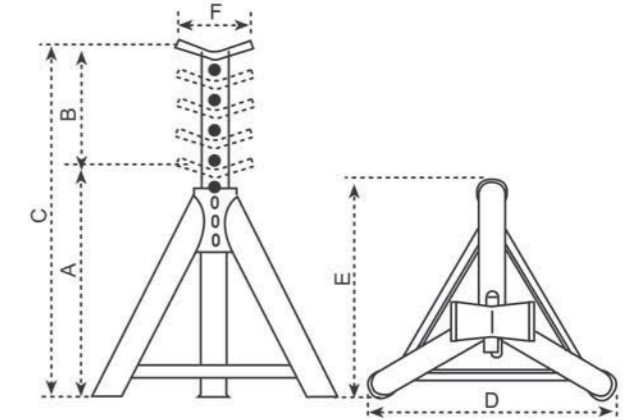
Model	T250	T300
Suitable for use with	1.5 to 5 tonne steel jacks	10 to 20 tonne steel jacks
Arm Length (mm)	250	300
Handle Length (mm)	130	250



Axle Jack Stand SN series

For all professional applications !

- Capacity from 1500kg to 16000kg.
- Heavy duty structure, high stability and long life.
- According to safety regulations, every vehicle must be supported by stands.



Model	SN15A	SN15B	SN30	SN50	SN80A	SN80B	SN160A	SN160B	SN160C
Capacity (kg)	1500	1500	3000	5000	8000	8000	16000	16000	16000
Min. Height A (mm)	260	420	320	375	380	580	295	435	675
Max. Height B (mm)	140	240	210	200	220	385	140	280	420
Fully Extended C (mm)	400	660	530	575	600	965	435	715	1095
Pitch (mm)	38	65	42	50	55	75	70	70	70
Top F (mm)	70	70	70	70	125	125	130	130	130
Distance of Legs D (mm)	270	415	335	385	400	596	321	480	705
Distance of Legs E (mm)	240	355	250	325	350	520	272	420	605
Net Weight (kg)	2	3.5	4.5	5	5.4	9	13.2	20	30

Farm Jack SN series

- Multi-functional tool is great for lifting tractors or heavy trucks, pulling posts and poles, and even serves as an all-purpose hoist or winch.



Model	HBG35A	HBG35B	HBG35C	HBG35D
Size	20"	33"	48"	60"
Capacity In Min.Height (T)	3.5	3.5	3.5	3.5
Capacity In Max.Height (T)	2	1.5	1	0.8
Min. Height (mm)	153	153	154	155
Max. Height (mm)	680	700	1070	1350
N.W./G.W. (kg)	12/13	13/14	14/15	15/16

Forklift Jack HFJ series

HFJ-400 / HFJ-700A

- High capacity and rugged construction.
- Extra low pick up point and 2-position lift pad for hard-to reach places under low profile lift trucks.
- Specially designed hydraulic pump with German seal kits and overload valve.
- Removable handle and compact size.
- **Conforms to CE standard and ANSI standard.**

HFJ-500

- **Uniquely built in two lifting speeds.**
Quick lifting and slow lifting which can be automatically switched between with load and without load.
Quick lifting: 20 times pump strokes.
Slow lifting: 60 times pump strokes.
- **Two alternative lifting positions.**
Low position: capacity 4000kg.
High position: capacity 5000kg.
- **Built in overload valve and bypass valve.**
Guarantees safety and reliable operation.
- **Low profile lifting: 65mm.**



Model	HFJ-400	HFJ-700A	HFJ-500	
Lifting Position	--	--	Low position	High position
Rated Capacity (kg / lbs)	4000 / 8800	7000 / 15400	4000 / 8800	5000 / 11000
Min. Lifting Height (mm / inch)	65 / 2.5	65 / 2.5	65 / 2.5	414 / 16.3
Max. Lifting Height (mm / inch)	406 / 16	420 / 16.5	425 / 16.7	720 / 28.3
Width (mm / inch)	203 / 8	250 / 10	210 / 8.3	
Pump Stroke to Max. Height	45	45	60	
Packing Size (mm / inch)	700x240x460 / 27.5x9.5x18	780x290x520 / 30.7x11.4x20.5	720x260x350 / 28.3x10.2x13.8	
Net Weight (kg / lbs)	33 / 73	48 / 106	45 / 99	
Gross Weight (kg / lbs)	35 / 77	51 / 112	47 / 103	

Forklift Jack Stand HT series

- Heavy duty design and wide base.
- Heat treated heavy-duty holding pins.
- Provide support for forklifts or heavy machinery.



Model	HT-7	HT-9
Used with Forklift Jack	HFJ-400A	HFJ-700A
Capacity/Pair (tonne)	13	18
Adjustable Range (mm)	242-400	242-415
Net Weight (kg)	13	15

Note: Sold in pairs only



HFJ-400 forklift jack in use with support stand HT-7

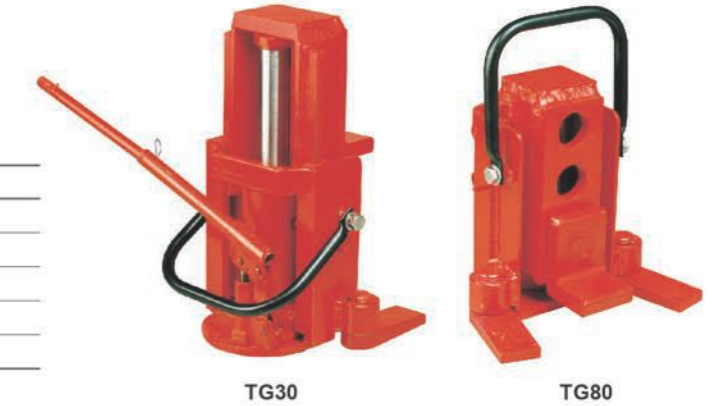
HFJ-700A forklift jack in use with support stand HT-9

Toe Jack TG series

Professional class

- Super low profile lifting toe
- Adjustable Lifting toe
- Heavy duty structure

Model No.		TG30	TG80
Capacity (tonne)		3	8
Lifting Stroke (mm)		140	140
Min. Toe Height (mm)		15	20
Lifting Range (mm)		15-155	20-160
Net Weight (kg)		21.5	28



Industrial Toe Jack TL series

Professional class

- Heavy-duty, industrial quality, dual purpose jack.
- Designed for lifting loads with very low minimum clearances (foot) or high clearances (head).
- Ideal for house moving, machinery installation and application at shipyard, bridge building or plant construction sites.
- Great companion tool for machinery type rollers.
- Convenient 2001/2 swivel socket for easy operation in any direction on 5 and 10 ton models.
- Safety valve for overload protection.
- Features spring assisted return and over-travel protection on 5 or 10 ton models.
- Ram is made of heat treated special steel to resist rust and assure strength.
- Not affected by extreme temperatures.
- Pump handle included.
- **Conforms to ANSI/ASME B30.1 standards.**



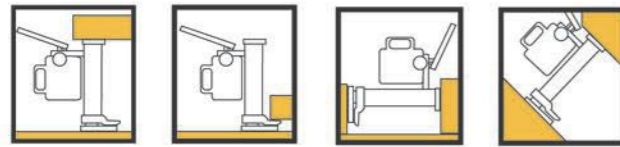
Model No.		TL25	TL50	TL100	TL150	TL250
Rated Capacity (tonne)		2.5	5	10	15	25
Min. Toe Height (mm)		25	25	25	35	40
Lifting Stroke (mm)		110	137	136	136	136
Base (LXW) (mm)		203x140	250x194	281x210	297x248	330x280
Toe Size (LXW) (mm)		48x64	60x99	62x115	64x128	64x128
Overall Height (mm)		234	280	320	350	354
Net Weight (kg)		14	23	34	50	72

Hydraulic Jack HM series

LogisLIFT hydraulic jacks for repairs, maintenance and installation of heavy machines

- Compact and stable construction.
- Can be used in any position.
- Housing revolves 360 degrees.
- Lowering speed can be accurately adjusted.
- Protected against overloading.
- Pump lever is removable.
- **According to CE and US standard USA ASME/ANSI B30.1.1986.**

**HOT!
SALE**

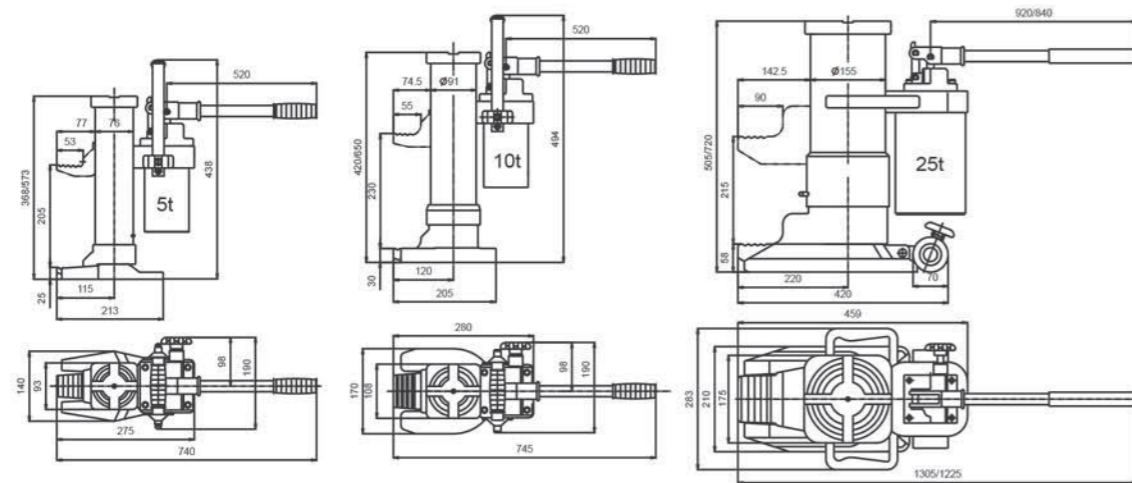


HM50 HM100 HM250

CAUTIONS

To avoid possible personal injury or damage to equipment

- Do not exceed the maximum load capacity of the jack.
- Do not add additional load to a lifted load.
- Do not use in unstable or hazardous positions.
- Unit must be used on flat surfaces able to carry the load.
- The load must be stable during lifting.
- An unstable load may cause the jack or load to slip.
- Do not use jack(s) if damaged, altered or in poor condition.
- Do not lift people or loads with people on them.
- Do not lift at the end of the toe. Fully engage the load with the toe.



Type	HM50	HM100	HM250
Capacity (tonne)	5	10	25
Lifting Range of Foot (mm)	25-230	30-260	58-273
Lifting Range of Head (mm)	368-573	420-650	505-720
Max. Lever Force (kg)	38	40	
Net Weight (kg)	25	35	102

Machine Jack TB series

Professional class

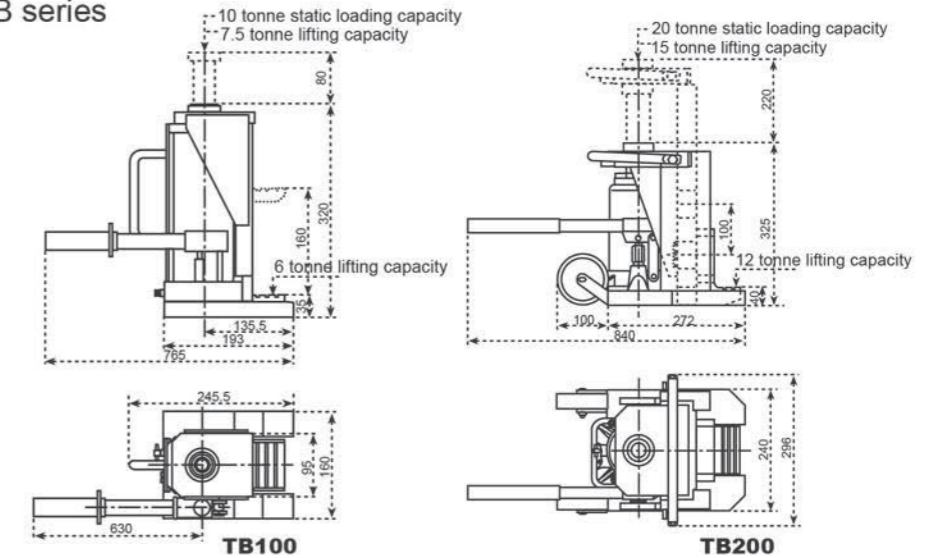
- **Conforms to CE safety standard.**

TB100

Static loading capacity on top 10 tonne

TB200

Static loading capacity on top 20 tonne



TB100 TB200

Model		TB100	TB200
Lifting Capacity	on top	7.5	15
	on toe	6	12
Lifting Stroke	mm	160	140
Lifting Range of Top	mm	320-560	325-545
Min. Loading Height Using Lifting Toe	mm	35	40
Min. Loading Height Using Lifting Toe at Max. Adjustment	mm	160	-
Lifting Range of toe	mm	35-195	40-260
Net Weight	kg	25	69

Trailer Stabilizer JK15

- ▲ This Jack will keep a trailer level when disconnected from a tractor, or when it is parked on a sloping ground.
- ▲ 5 positions height adjustable, 50mm per hole.
- ▲ It is easy to move this jack with two wheels systems.



Model No.		JK15
Rated Capacity (Tons)		15
Min. Height (mm)		1070
Max. Height (mm)		1270
Adjustable range (mm)		200
Wheels		Rubber, 200x50
Support Length (mm)		1200
Total Height (mm)		1750
Total width (mm)		590
Net Weight (kg)		86



Hydraulic Bottle Jack HB series

- Versatile jacks can be used vertically (not upside down) or at any angle to not more than 5 degrees from vertical position.
- Can also be used horizontally or vertically in appropriately designed fixtures.
- Machined and polished cylinder walls ensure straight lifts, preventing uneven wear.
- Heat treated adjustable extension screw with cleaned lift saddle prevents slippage.
- Bottle jacks with lifting capacity of 12 tons and over have carrying handle for convenient moving or positioning.
- Patented bypass mechanism protects hydraulic cylinder from overpumped. Durable baked blue enamel finish.
- **Conforms to ANSI/ASME safety standards / CE standard.**



Model		HB20C	HB40C	HB50C	HB80C	HB100C	HB125C	HB160C	HB200C	HB300C	HB500C
Rated Capacity	(kg)	2000	4000	5000	8000	10000	12500	16000	20000	30000	50000
Minimum Height	(mm)<=	158	195	197	200	217	227	242	245	285	300
Lifting Height	(mm)<=	90	125		135		145		180		
Adjust Height	(mm)<=	60		80	70		80	70		--	
Operating Force of Handle	(N)<=	400									
Net Weight	(kg)	2.5	3.7	5.0	6.5	7.5	9.5	11.5	12.5	23.0	34.0

2-Stage Hydraulic Bottle Jack HC series

- Provide a high lift with a minimum collapsed height.
- Can be used vertically (not upside down) or at any angle to not more than 5 degree from vertical position. ave low operating force and large range capacity.
- **Conforms to ASME/ANSI-PALD standards.**



Model		HC20	HC40	HC60	HC80	HC100	HC120	HC160	HC200	HC300
Capacity	(tonne)	2	4	6	8	10	12	16	20	30
Min.Height	(mm)	165	150	154	156	225	230	232	235	250
First Lifting Height	(mm)	98	80		140					
Second Lifting Height	(mm)	92	80		145				140	
Adjust Height	(mm)	55	35	40		50				—
Packing Size	(cm)	60x21x20	61x14x22	47x16x21		38x19.5x26			20.5x20x26	24x22x27
Net Weight	(kg)	2.9	4.5	5.5	6.5	8.5	10.5	13	16.5	25

Floor Jack HF series

- Features a one-piece lift arm with dual leveling mechanism and reinforced flanged side frames for added strength under load.
- Patented safety bypass system prevents overextension and accidental overloading.
- Double swivel saddle and heavy steel casters allow safe, easy positioning.



Model		HF20A	HF20D	HF23A	HF30A	HF23B	HF30B
Capacity	(kg)	2000		2250	3000	2250	3000
Min./Max. Height	(mm)	135/385	135/342	135/385	135/395		
Overall Size	(mm)	550x212x140	471x199x135	550x212x140	628x252x168	693x346x176	660x346x180
Packing Size	(mm)	555x235x155	480x210x145	555x235x155	640x267x179	735x386x181	738x385x203
Net Weight	(kg)	12	9.5	13	19	34	36
Safety Std.		CE/GS		ANSI/ASME	CE/GS		
Application		Light duty				Heavy duty	

Long Chassis Service Jack HF series

Professional class

- Welded base and cylinder to assure strength and eliminate leaks.
- Chromed pump piston and ram for added rust resistance.
- Foot pedal brings saddle up to load quickly.
- **Meets ANSI/ASME PALD standard & CE/GS standard.**



Model No.		HF20C	HF30C	HF50C	HF50H	HF100C	HF100H
Capacity	(tonne)	2	3	5	5	10	10
Max. Saddle Height	(mm)	800	600	560	685	560	685
Min. Saddle Height	(mm)	140	130	150	150	160	160
Net Weight	(kg)	58	70	95	95	145	145

Air / Hydraulic Service Jack HF series

Professional class
Latest air/hydraulic technology.

Model No.	HF50E	HF100E
Capacity (tonne)	5	10
Max. Saddle Height (mm)	560	560
Min. Saddle Height (mm)	150	160
Air Pressure (Mpa)	0.7-1.0	0.7-1.0
Net Weight (kg)	100	148



Air Service Jack HF series

Professional class

- Welded base and cylinders to assure strength and eliminate leaks.
- Chromed pump piston and ram for added rust resistance.
- Extension screw gives added height when necessary.
- Meets ANSI/ASME PALD standard & CE/GS standard.

Model No.	HF220DA	HF220DB
Capacity (tonne)	22	22
Max. Saddle Height (mm)	525	465
Min. Saddle Height (mm)	210	185
Air Pressure (Mpa)	0.7-1.0	0.7-1.0
Net Weight (kg)	46	46



2-Stage Air Service Jack HF series

Professional class

- Provides quick and effortless lifts for rated capacity loads.
- Quick lift without load (6 seconds).
- Self-retracting by air.
- Long T-handle let you easily position jack under vehicles.

Model No.	HF300DC
Capacity (tonne)	30/15
Max. Saddle Height (mm)	305
Min. Saddle Height (mm)	148
Air Pressure (Mpa)	0.7-1.0
Net Weight (kg)	5



Hydraulic Pipe Bender ZD series

- Capable for bending steel tube pole and so on.
- Bending bars can be adjustable to distance to accommodate this distance needed.



Model No.	Capacity (ton)	Die size (inch)	G.W.(KG)	N.W.(KG)	Package size (cm)	PCS/20'ft
ZD101	10	1/2,3/4,1,1-1/4,1-1/2,2,2-1/2,3	19	18	73X30X15.5	260
			43	41	73X16X29.5	
ZD102	10	1/2,3/4,1,1-1/4,1-1/2,2	47	45	77x48x17	450
ZD103	10	1/2,3/4,1,1-1/4,1-1/2,2,2-1/2,3	57	55	77x48x17	400
ZD121	12	1/2,3/4,1,1-1/4,1-1/2,2	40	38	63X17X57	430
ZD161	16	1/2,3/4,1,1-1/4,1-1/2,2,2-1/2,3	61	59	64.5X19X61	250

Air / Manual Bottle Jack HN series

Professional class

- Provides quick and effortless lifts for rated capacity loads.
- Conforms to CE safety standard.

Model	HN200
Capacity (tonne)	20
Max. Saddle Height (mm)	483
Min. Saddle Height (mm)	253
Air Pressure (Mpa)	0.7-1.0
Net Weight (kg)	23

